

Box Properties

--Description--

Name:

Type: Vented Box

Shape: Prism, square

--Box Parameters--

Vb = 2.099 cu.ft

V(total) = 2.251 cu.ft

Fb = 30.59 Hz

F3 = 28.36 Hz

Fill = none

--Vents--

No. of Vents = 1

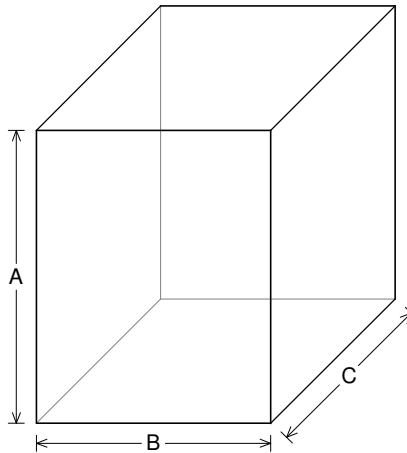
Vent shape = rectangle

Vent ends = one flush

Hv = 2 in

Wv = 5 in

Lv = 12 in



--External Dimensions--

A = 20 in

B = 16 in

C = 16 in

--Internal Dimensions--

A = 18.5 in

B = 14.5 in

C = 14.5 in

--Wall Thickness--

Front = 0.75 in

Side = 0.75 in

Driver Properties

--Description--

Name: REX 12 S4

Type: Standard one-way driver

Company: RE Audio (2015)

--Configuration--

No. of Drivers = 1

--Driver Parameters--

Fs = 23.92 Hz

Qms = 5.558

Vas = 3.437 cu.ft

Xmax = 0.591 in

Sd = 85.5 sq.in

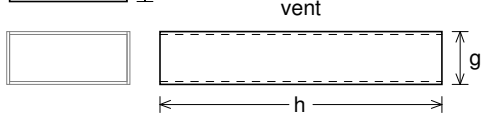
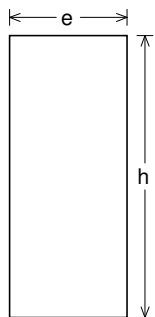
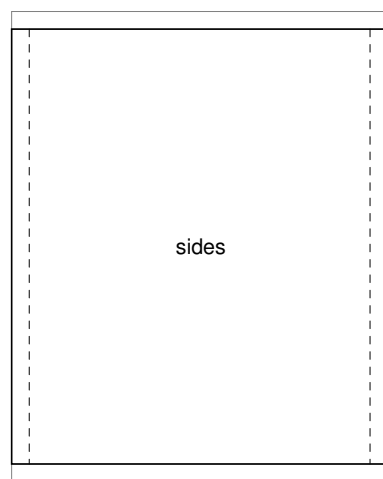
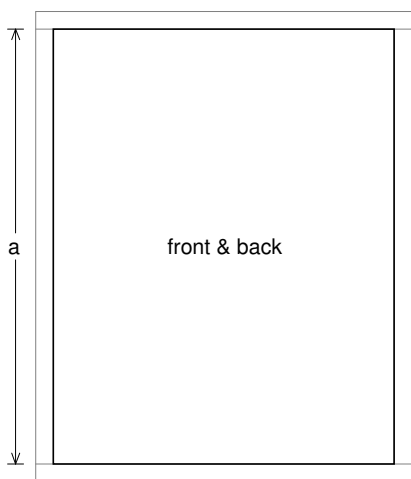
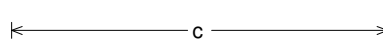
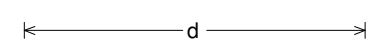
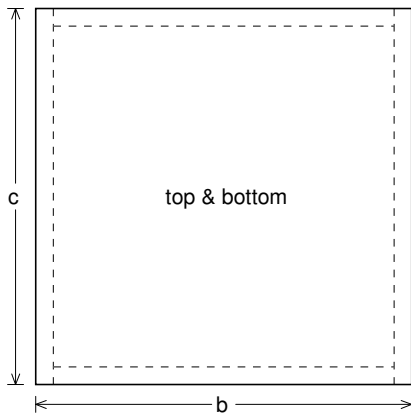
Qes = 0.697

Re = 3.607 ohms

Le = 5.017 mH

Z = 4.329 ohms

Pe = 200 watts



Box Parts

Box Shape: Square Prism

- 1 Top, 1 Bottom: depth (c) = 16 in
width (b) = 16, thickness = 0.75 in
- 1 Front, 1 Back: height (a) = 18.5 in
width (d) = 14.5, thickness = 0.75 in
- 2 Sides: height (a) = 18.5 in
depth (c) = 16, thickness = 0.75 in

--Driver Mounting--
Mounting: Front

--Vent Parts--

- 1 Top, 1 Bottom:
width (e) = 5, length (h) = 12 in
thickness = 0.125 in
- 2 Sides:
height (g) = 2.25, length (h) = 12 in
thickness = 0.125 in



Wiring Diagram

